

PIONEER

Fast Potato and Carrot Peeler



QUICKNESS AND HIGH QUALITY PROCESSING WITH MINIMAL WASTE

Quickness and high quality processing combined with savings may seem impossible, but not for **Pioneer**, the peeler that **peels potatoes and carrots in just two minutes, perfectly** and with minimal waste.

The specific shape of the peeling disc and the peeling chamber ensure a uniform abrasive action across the whole surface of the product, **reducing wastes**.

Furthermore, an electronic timer controls the peeling time so that potatoes spend no longer than necessary under the abrasive effect.

Skins are removed by a jet of water and collected in a **filter** prior to discharge.

Made of AISI 304 stainless steel, it is robust and **operatively safe**, since lid and outfeed door are equipped with a safety microswitch.

After use, peeling disc and filter can be easily removed for cleaning.

This guaranteed hygiene, together with its fast and reliable working, make **Pioneer** a machine no modern kitchens should work without.

Wilma

LA SCIENZA DELLE GRANDI CUCINE



PIONEER

Fast Potato and Carrot Peeler

MACHINE FEATURES

- Frame made of AISI 304 stainless steel (thickness: 2 mm).
- Plastic feet with floor-anchoring holes.
- Peeling disc and deflectors made of Anticorodal alloy and covered with food-grade abrasive material.
- Lid made of food-grade ABS and equipped with a safety lock.
- Safety devices on lid and product outfeed.
- Peeling disc removable for cleaning and powered by a gearmotor with overload cut-out.
- 24V wall-mounted control panel with electronic timer and cycle starting, product discharging and emergency-stop buttons.

OPTIONS

SORTING TABLE

Wall-mounted table made of AISI 304 stainless steel with two work places provided with: peeled potato vat, food-grade plastic cutting surface with waste hole, waste bin, water tap and overflow.

Table dimensions (WxDxH): mm 1600x700x850.



In versions combined with the sorting table, **Pioneer K15/T** and **K30/T** are taller and may be installed on the right or left sides of the table.

SKIN COLLECTION FILTER

Made of AISI 304 stainless steel, it is composed of a container with a drain and a removable filter.



WATER INLET SOLENOID VALVE

Controlled by a timer, it allows the inlet of water only for the programmed peeling time.

PRODUCT COLLECTION TROLLEY

Made of AISI 304 stainless steel, it is equipped with a handle, four castors and a 2/1 GN container (height: mm 200).

Dimensions (WxDxH):
mm 690x660x700

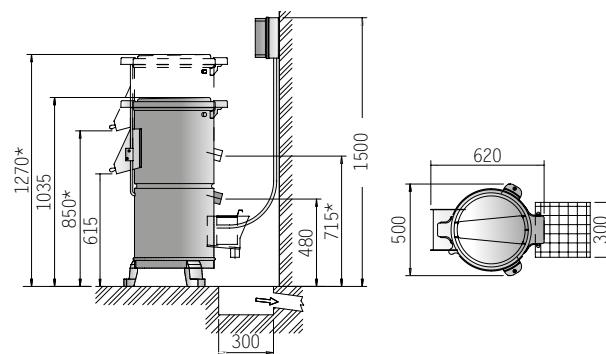


TECHNICAL DATA

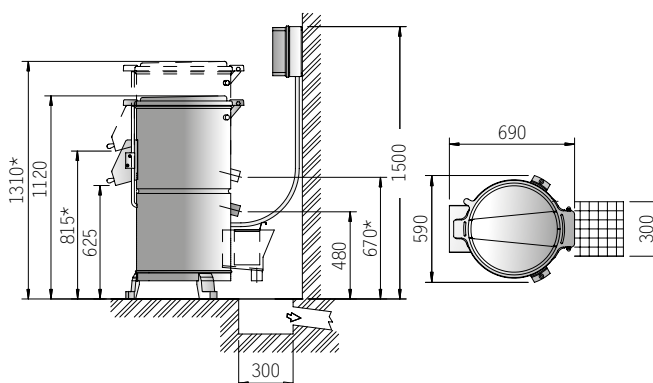
	PIONEER K/15	PIONEER K/30
Loading capacity kg	15	30
Average peeling time min.	2	2
Water inlet Ø	3/4"	3/4"
Water drain Ø	2"	2"
Power kW	0.55	1.1
Voltage V	3~230/400V 50Hz + PE	3~230/400V 50Hz + PE
IP protection level	55	55
Net weight kg	62	97

DISEGNI TECNICI

PIONEER K/15 - K/15T*



PIONEER K/30 - K/30T*



Total or partial reproduction prohibited. - September 2025



APPLIANCE MANUFACTURED IN ACCORDANCE
WITH HARMONISED STANDARDS AND
PROVIDED WITH THE CE MARKING

Company with EN ISO 9001 certified
Quality Management System

NILMA S.p.A.

Via E. Zaccagni, 24/A - 43122 Parma - Tel. +39.0521.785241 - Fax +39.0521.774642 - www.nilma.com • [Nilma@nilma.it](mailto:nilma@nilma.it)
We reserve the right to make any changes or technical improvements considered necessary without notice



Nilma
LA SCIENZA DELLE GRANDI CUCINE